

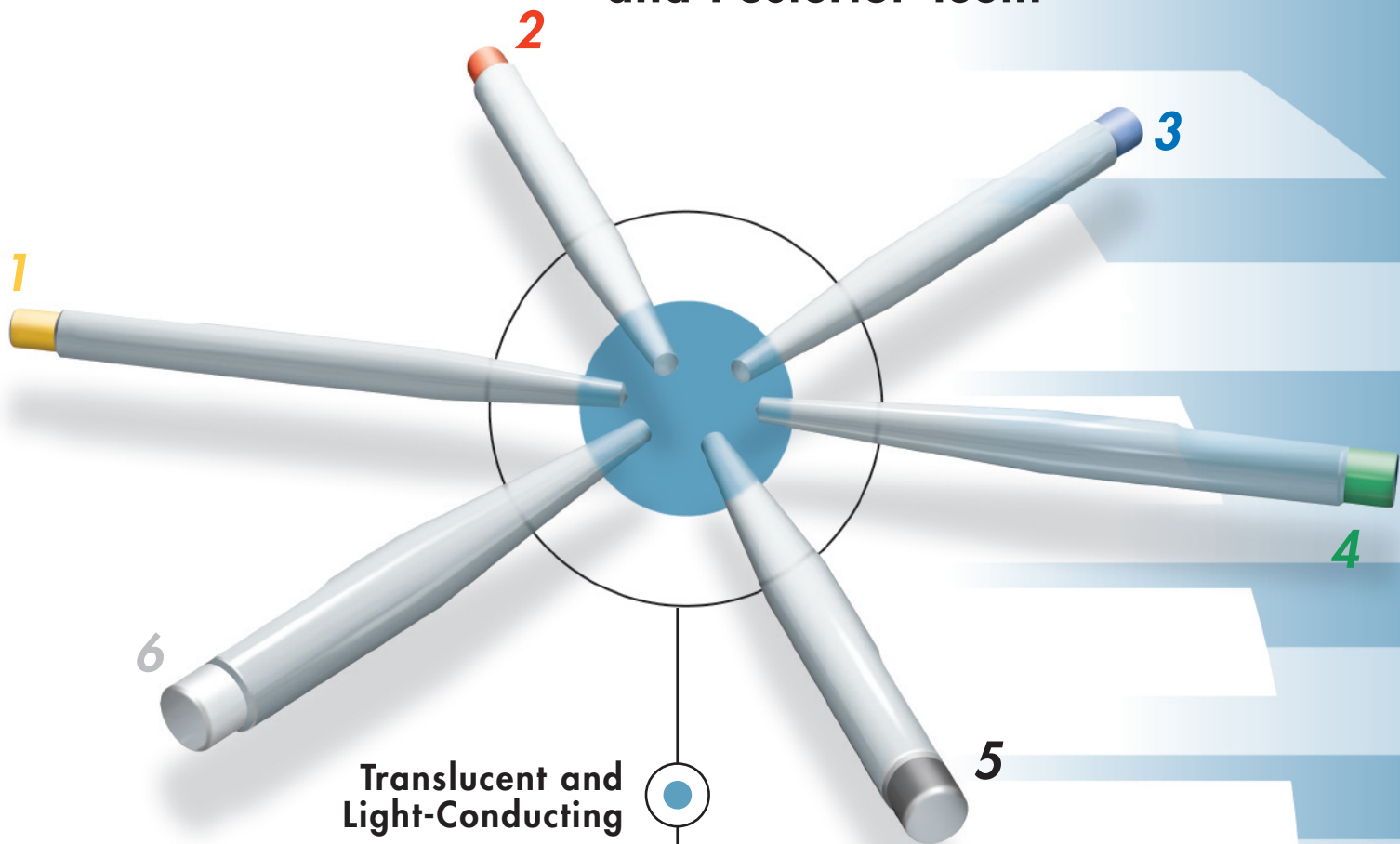
*Radix[®] fiber **post***

*easy**post**[™]*

Lighten Up Your Core Buildup with fiber post

DENTSPLY
MAILLEFER

A Full Range of Sizes for All Anterior and Posterior Teeth



Translucent and Light-Conducting

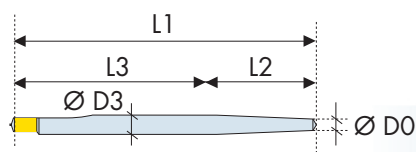
Radio Opaque

Reduced Risk of Root Fracture

Color Coding on Head of Post

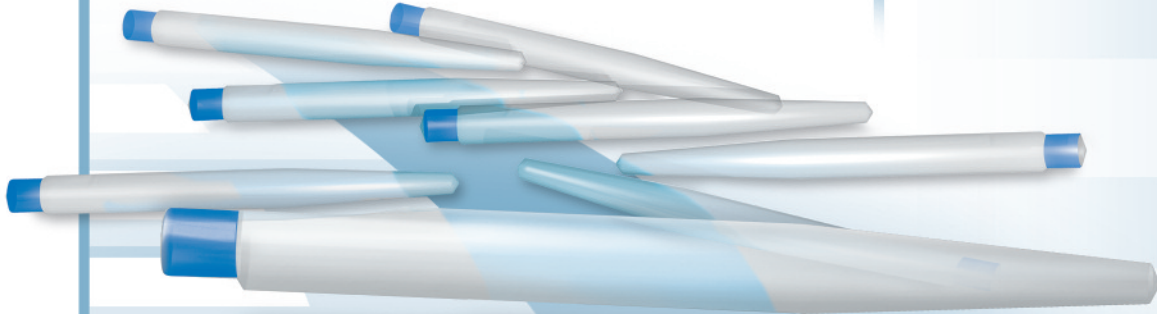
Endo-Design

High Biocompatibility



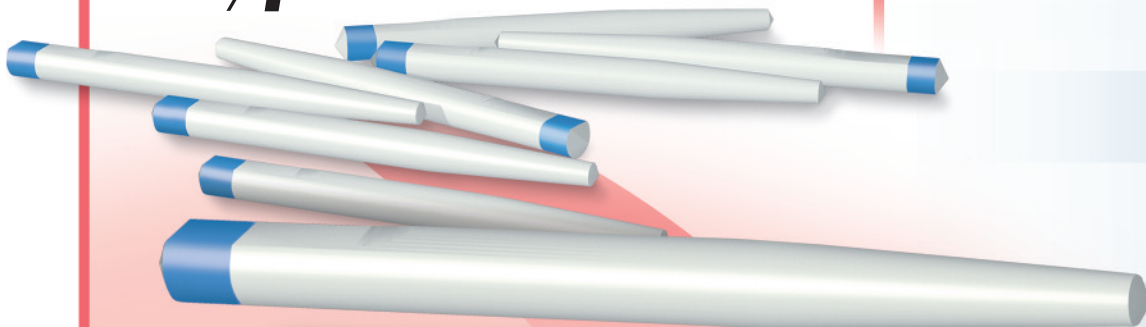
	[mm]	ØD0	ØD3	L1	L2	L3
N°1		0.8	1.35	20.0	6.00	13.77
N°2		0.8	1.47	20.0	7.25	12.52
N°3		1.0	1.67	20.0	7.20	12.51
N°4		1.0	1.83	20.0	9.00	10.71
N°5		1.3	2.04	20.0	8.00	11.63
N°6		1.3	2.22	20.0	10.0	9.63

Radix[®] fiber **post**



- **Perfect Aesthetics**
- **Outstanding Strength**
- **Fast On-Command Cementation**

easy**post**[™]



Our Fiber Post system exploits the healthy tooth's natural strengths, letting you achieve a more real-looking and dependable restoration:

Preserves the Tooth's Aesthetics

Radix® Fiber Post's translucent, light conducting glass fiber resin matrix reflects the natural hues of the tooth and eliminates shadows through crown restorations, for a superior and predictable result.

Respects the Tooth's Ergonomy

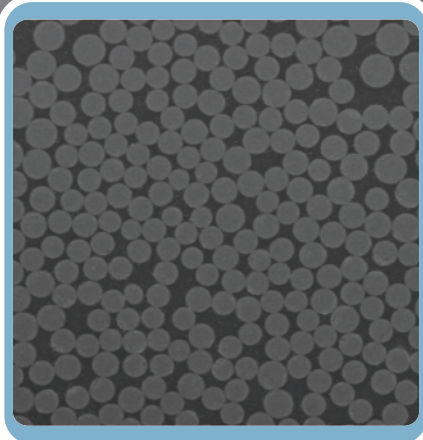
Radix® Fiber Post / EasyPost™'s optimized cyclindrico-conical endo-design limits the removal of dentin, thereby increasing the strength and clinical quality of the restoration.

Radix® Fiber Post / EasyPost™'s are available in a full range of sizes, for the restoration of all anterior and posterior teeth.

Minimizes the Risk of Tooth Fractures

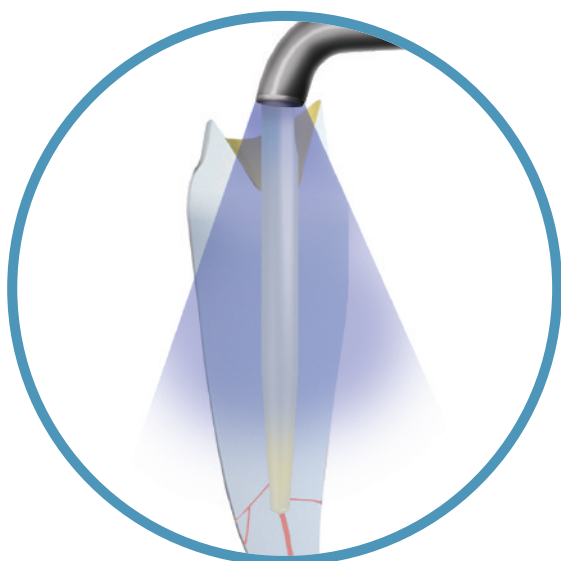
The high density of uni-directional glass fibers provides excellent strength and optimal flexibility, for a restoration that mimics the stress distributions of healthy teeth, thereby preventing fissures or fractures.

Cross-Section of Radix® Fiber Post



Composition

Zirconium-Enriched Glass Fibers	60%
Epoxy Resin Matrix	40%
Flexure Strength	1600 MPa



Rapid On-Command Cementation

Radix® Fiber Post is light conducting, allowing its use with light- and dual-cured cements and core materials, giving you greater control over cement and material set times.

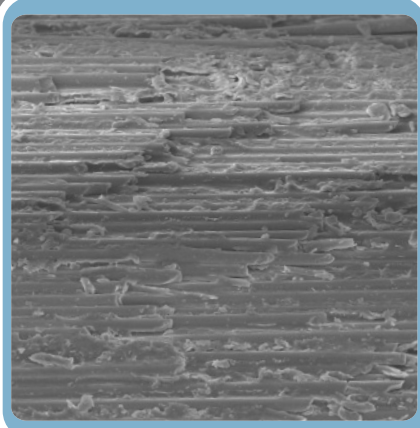


Proven, Dependable System

The Radix® Fiber Post / EasyPost™ range lets you achieve a reliable restoration quickly and easily. It can be used with all adhesive primers, bonding cements and core build-up materials that employ resinous bonding elements.

The micro-structured surface ensures that an optimal bond is achieved between post and cement, minimizing the risk of post decementation or dislocation.

Micro-structured Surface



Recommended Products

	Radix® Fiber Post	EasyPost™
Etching	DeTrey® Conditioner 36%	
Priming	XP BOND™ / Prime & Bond® NT	
Cementing	Calibra™	Dyract™ Cem ^{Plus}
Core Build-Up	Core-X™	

Radix® fiber post • Translucent and Light Conducting • For Dual-Cure Adhesive Technique

Radix® Fiber Post Basic Kit

- # 0.8 REF C 0614.BK-0.8 24x Radix® Fiber Post (N°1 & N°2), 1x Largo® Peeso Reamer N°1, 2x EasyPost™ Precision Drill (N°1 & N°2)
- # 1.0 REF C 0614.BK-1.0 24x Radix® Fiber Post (N°3 & N°4), 1x Largo® Peeso Reamer N°2, 2x EasyPost™ Precision Drill (N°3 & N°4)
- # 1.3 REF C 0614.BK-1.3 24x Radix® Fiber Post (N°5 & N°6), 1x Largo® Peeso Reamer N°3, 2x EasyPost™ Precision Drill (N°5 & N°6)



Radix® Fiber Post Trial Kit

- # 0.8 REF C 0614.TK-0.8 2x Radix® Fiber Post (N°1 & N°2), 1x Largo® Peeso Reamer N°1, 2x EasyPost™ Precision Drill (N°1 & N°2)
- # 1.0 REF C 0614.TK-1.0 2x Radix® Fiber Post (N°3 & N°4), 1x Largo® Peeso Reamer N°2, 2x EasyPost™ Precision Drill (N°3 & N°4)



easy post™ • White • For Self-Cure Adhesive Technique

EasyPost™ Set

- # 0.8 REF C 0602-0.8 24x EasyPost™ (N°1 & N°2), 1x Largo® Peeso Reamer N°1, 2x EasyPost™ Precision Drill (N°1 & N°2)
- # 1.0 REF C 0602-1.0 24x EasyPost™ (N°3 & N°4), 1x Largo® Peeso Reamer N°2, 2x EasyPost™ Precision Drill (N°3 & N°4)
- # 1.3 REF C 0602-1.3 24x EasyPost™ (N°5 & N°6), 1x Largo® Peeso Reamer N°3, 2x EasyPost™ Precision Drill (N°5 & N°6)



Refills

	Radix® Fiber Post		EasyPost™		LARGO® Peeso Reamer		EasyPost™ Precision Drill	
N°1	REF C 0613-1	10x	REF C 0600-1	10x	REF A 0009-1	6x	REF C 0601-1	3x
N°2	REF C 0613-2	10x	REF C 0600-2	10x			REF C 0601-2	3x
N°3	REF C 0613-3	10x	REF C 0600-3	10x	REF A 0009-2	6x	REF C 0601-3	3x
N°4	REF C 0613-4	10x	REF C 0600-4	10x			REF C 0601-4	3x
N°5	REF C 0613-5	10x	REF C 0600-5	10x	REF A 0009-3	6x	REF C 0601-5	3x
N°6	REF C 0613-6	10x	REF C 0600-6	10x			REF C 0601-6	3x